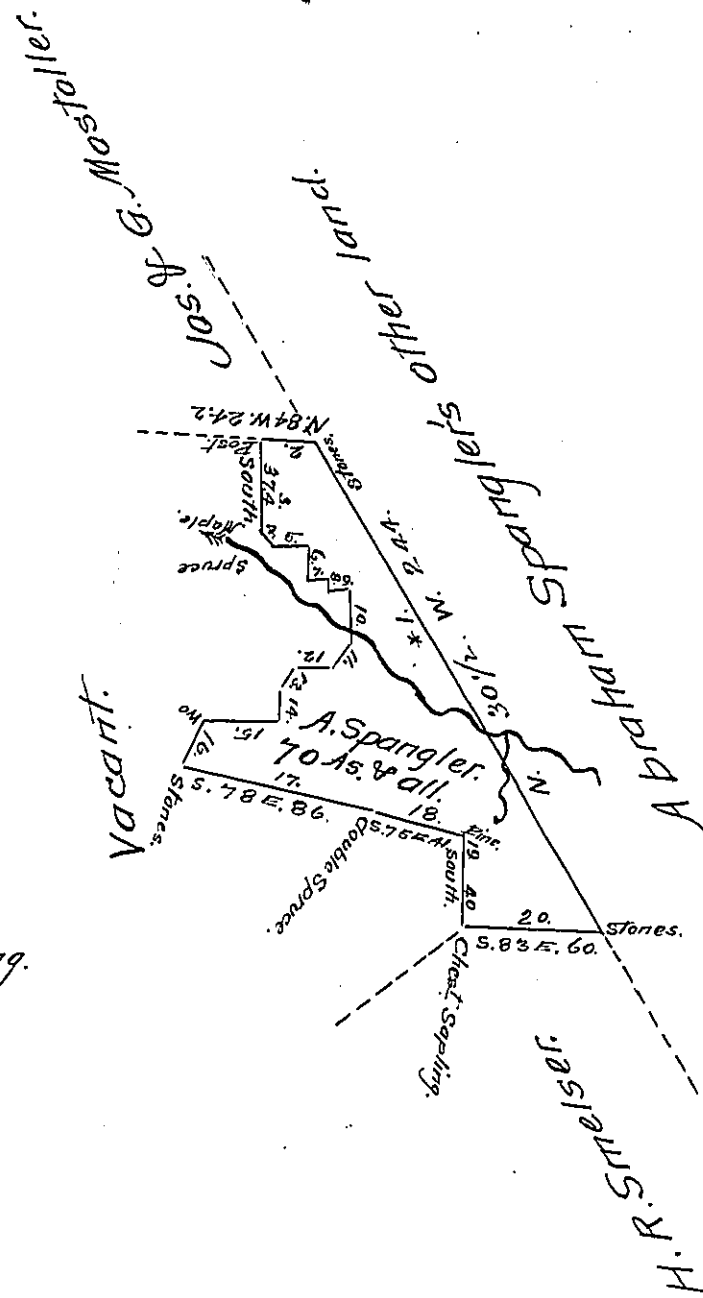


FORM NO. 1.

- | Sta. | Bearing | Dist. | Corners. |
|------|--------------|-------|-----------------|
| * 1. | N. 30 1/2 W. | 224 | Stones. |
| 2. | N. 84 W. | 24.2 | post. |
| 3. | South | 37.4 | Maple. |
| 4. | S. 38 E. | 6. | Spruce. |
| 5. | East | 15. | Stones. |
| 6. | South | 14.5 | small Birch. |
| 7. | East | 9. | Pine root. |
| 8. | South | 5.5 | Stones. |
| 9. | East | 10.8 | Maple. |
| 10. | South | 21.5 | Spruce. |
| 11. | S. 40 1/2 W. | 15. | W.O. |
| 12. | West | 15. | pine. |
| 13. | S. 34 W. | 12. | Stones. |
| 14. | South | 12. | Stones. |
| 15. | West | 33. | W.O. |
| 16. | S. 28 W. | 20. | Stones. |
| 17. | S. 78 E. | 86. | Dou. Spruce. |
| 18. | S. 75 E. | 41. | Pine. |
| 19. | South | 40. | Chest. Sapling. |
| 20. | S. 83 E. | 60. | Stones. |



Situate in Story creek Township Somerset-
 County, And., surveyed July 4th 1839 and February
 27th 1840, by Henry L. Holbrook-
 in pursuance of a warrant to Abraham Spang-
 ler for seventy Acres dated June 8th 1839.

Certified April 16th 1859.

Pr. Josiah P. Walker C.S.

To John Rowe Esq. }
 Surveyor General }

- IN TESTIMONY that the above is a copy of the original remaining on file in
 the Department of Internal Affairs of Pennsylvania, made
 conformably to an Act of Assembly approved the 16th day of
 February 1833, I have hereunto set my hand and caused
 the Seal of said Department to be affixed at Harrisburg,
 this Fifth day of March 1907.

Loac R. Brown
 Secretary of Internal Affairs.